

# AISENSE Series

## Portable Color Doppler Ultrasound



Lightweight



Eye Protection



High Resolution



Premium Performance

### Lightweight

- Lightweight, easy transport for Anyone to carry, Anytime, Anywhere.



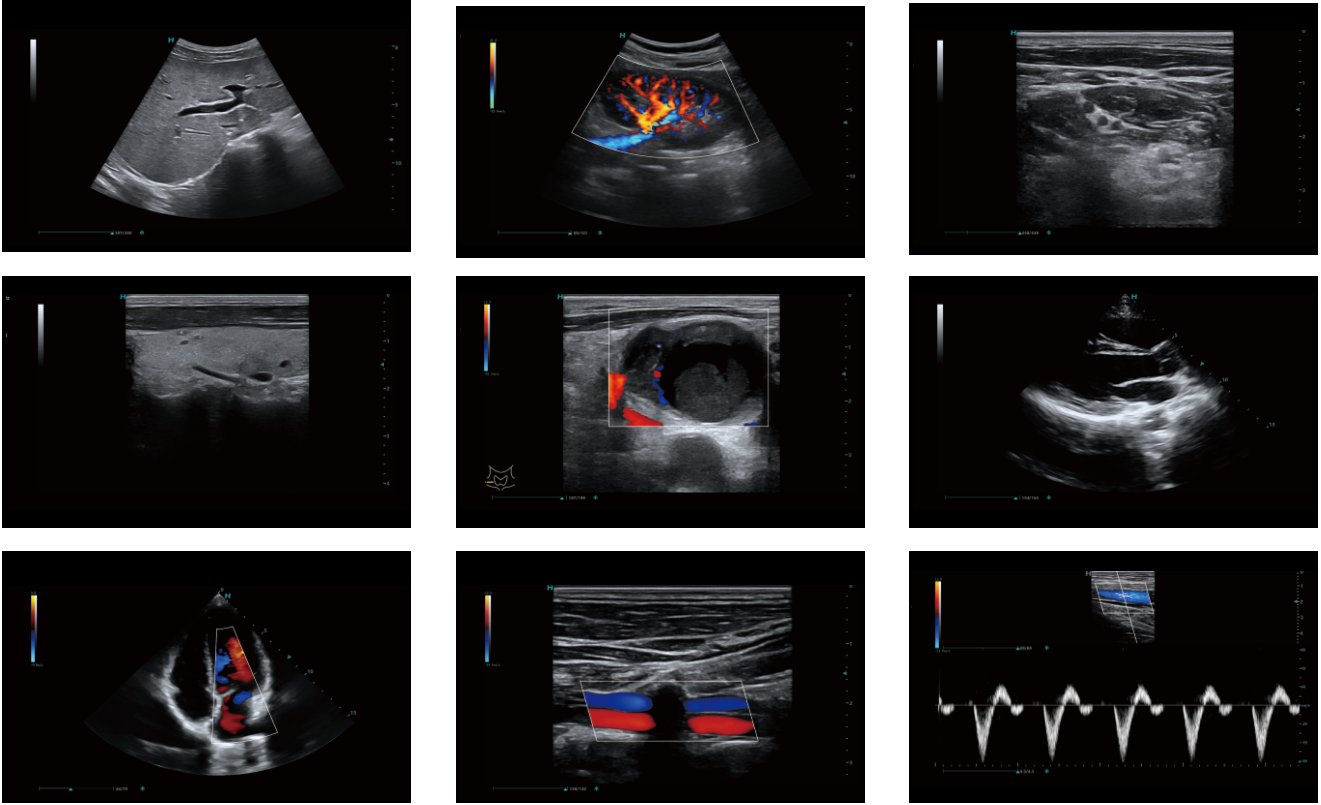
### Eye Protection

- Hardware-Level Eye Care: Hardware-level low blue light, flicker-free DC, and auto dimming protect vision during extended use.



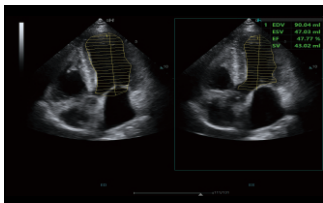
## High Resolution

- Breaking through the traditional limitations of ultrasound in spatiotemporal resolution, it delivers clearer and more precise images for reliable clinical diagnosis.

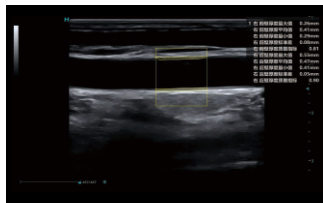


## Premium Performance

- Precision Measurement



Auto EF



Auto IMT

- One-click automatic optimization

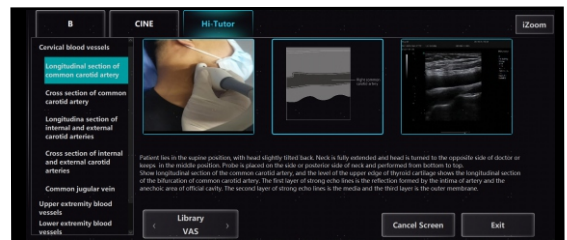


Before Optimization



After Optimization

- Teaching Tutor



This system provides methods for employing ultrasound, along with images depicting tissue anatomy and standard clinical scan planes, to support physicians' continuous learning.

## Qingdao Hisense Medical Co., Ltd.

Company Address: No.399, Songling Rd., Laoshan Dist., Qingdao, China Website: <https://medical.hisense.com>

Email: [znylhwyxb@hisense.com](mailto:znylhwyxb@hisense.com) Hotline: +86-532-55753946/55752113

